

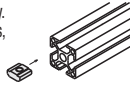
# Nuts for Aluminum Extrusions - Overview

For 8-45 Series (Slot Width 10mm)

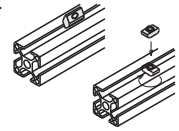
## ■ Nuts for Aluminum Extrusions - Overview

MISUMI offers variety of Pre-Assembly or Post-Assembly Insertion Nuts for Aluminum Extrusions. Select an applicable type specific to your application.

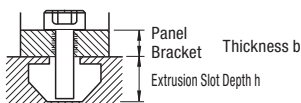
Pre-Assembly Insertion: Insert from the slot ends before assembly.  
Large width causes less plays in the slots,  
making screw tightening easy.



Post-Assembly: Mountable from slots after assembly.



Type	Photo	Features	Pre-Assembly				Post-Assembly			
			Material		Page		Material		Page	
			Steel	Stainless Steel	Single Item	Package	Steel	Stainless Steel	Single Item	Package
Standard		Most standard and economical products. Can be connected temporarily in combination with optional stoppers.	○	○	P.715	P.714	○	○	P.718	P.714
Temporary Holding (Ball Spring)		Can be moved in the extrusions smoothly. Temporary holding is repeatedly possible.	○	○	P.716	P.714	○	○	P.719	P.714
Temporary Holding (Leaf Spring)		Secure temporary holding with springs on both sides.	-	-	-	-	○	○	P.719	P.720
Temporary Holding (Resin Stopper)		Resin stopper on outer circumference prevents aluminum extrusions from being scratched when mounting temporarily.	○	○	P.716	-	-	-	-	-
Post-Assembly Rotational		Insert the nut into the extrusion and turn it in the slot. Large nut width prevents plays.	-	-	-	-	○	○	P.718	-
With Lock		Included set screw enables nut fixing. Convenient where panes and covers are removed frequently.	○	-	P.717	-	○	○	P.720	-
Thread Locking Adhesive Type		Reduces loosening due to vibrations caused by transfer or equipment moves. One-time use and repeated use types are available.	○	-	P.715-P.716	-	○	-	P.718-P.720	-
Compact (Short Nuts)		Usable with narrow pitch when multiple nuts are lined in the slots. (Approx. 40% shorter than the standard width)	○	-	P.717	P.717	○	-	P.720	P.720
Square Nuts		Sheet metal type: more economical than standard nuts.	○	○	-	P.717	-	-	-	-
Screw Integrated		Requires less time for screw tightening.	-	○	P.721	-	-	○	P.721	-
Long Nut		Workpieces such as Linear Guides are mountable with desired pitches.	○	○	P.722	-	○	○	P.722	-
Offset Nut (Other than 5 Series)		When connecting the extrusions at corners with Pre-Assembly Insertion Double Joint (refer to P.709), the nut does not protrude from the extrusion.	-	○	P.717	-	-	-	-	-
Conductive Washers (Other than 5 Series)		Electrical conductivity between extrusions is achieved by combining with Toothed Washer (P.721).	-	○	P.721	-	-	-	-	-



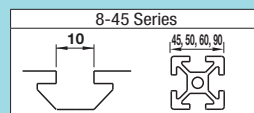
## ■ Aluminum Extrusions and Applicable Screws to Mount Panes / Brackets (Size M - L Dim.)

Slot Width	Extrusion Square	Depth h	Applicable Nut HNTT	Panels / Brackets Thickness b (mm) to be Mounted on Extrusions											
				0.8	1	1.2	1.5	2	3	4	4.5	5	6	8.2	9
				10	12	15	20	25	30	35	40	45	50	55	60
10	45	13	8-4											M4-20	×
			8-5											M5-20	M5-22
			8-6											M6-20	M6-25
			8-7											M8-20	M8-25
			8-8	×										M8-20	M8-25

⦿ "x" means there is no applicable screw. Use one size smaller tapped products.

# Nuts for Aluminum Extrusions - Bulk Packages

## For 8-45 Series (Slot Width 10mm)



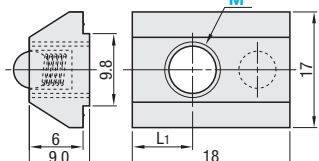
■ **Features:** Bulk packages are cost effective for in-house stock or large quantity uses.

### ■ Pre-Assembly Insertion Spring Nuts - Pack (100/Pkg.)



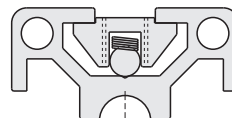
RoHS 10

Type	Main Body	Ball	Spring	Surface Treatment
PACK-HNTU	EN 1.0301 Equiv.	EN 1.4301 Equiv.	JIS-SWP-A	Trivalent Chromate
PACK-SHNTU	EN 1.4301 Equiv. (Sintered)	EN 1.4301 Equiv.	EN 1.430 WPB Equiv.	-



Example

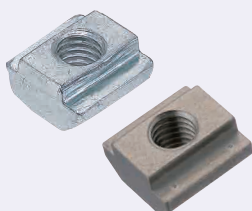
• Does not fall even if the extrusion is placed vertically.  
Built-in spring prevents slips.  
Moves easily in the slot when pressed slightly by hand.



Part Number		M				L1	Unit Price (1 ~ 10 packages)	
Type	No.						Package Price	Price per Pkg.
PACK-HNTU	8	4	5	6	8	6		
PACK-SHNTU						5.5		

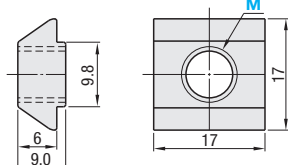
100 pcs. per package

### ■ Pre-Assembly Insertion Spring Nuts - Pack (100/Pkg.)



RoHS 10

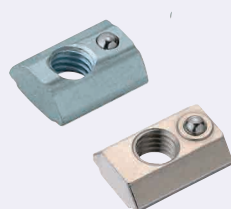
Type	Main Body	Ball	Spring	Surface Treatment
PACK-HNTT	EN 1.0301 Equiv.	EN 1.4301 Equiv.	JIS-SWP-A	Trivalent Chromate
PACK-HNTTSN	EN 1.4401 Equiv. (Sintered)	EN 1.4401 Equiv.	-	-



Part Number		M				Unit Price (1 ~ 10 packages)	
Type	No.					Package Price	Price per Pkg.
PACK-HNTT	8	4	5	6	8		
PACK-HNTTSN							

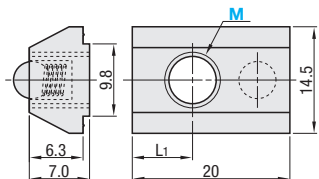
100 pcs. per package

### ■ Post-Assembly Insertion Spring Nuts - Pack (100/Pkg.)

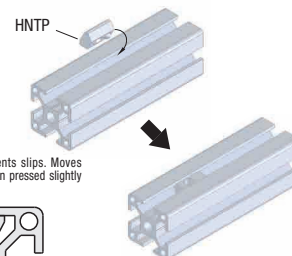


RoHS 10

Type	Main Body	Ball	Spring	Surface Treatment
PACK-HNTP	EN 1.0301 Equiv.	EN 1.4301 Equiv.	JIS-SWP-A	Trivalent Chromate
PACK-SHNTTP	EN 1.4301 Equiv. (Sintered)	EN 1.4301 Equiv.	WPB Equiv.	-



Example



Built-in spring prevents slips. Moves easily in the slot when pressed slightly by hand.

\*Does not fall even if the extrusion is placed vertically.

Part Number		M				L <sub>1</sub>	Unit Price (1 ~ 10 packages)	
Type	No.						Package Price	Price per Pkg.
PACK-HNTP	8	4	5	6	8	8		
PACK-SHNTTP						8.5		

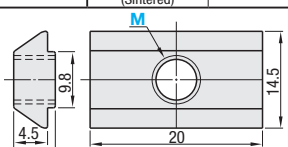
100 pcs. per package

### ■ Post-Assembly Insertion Stopper Nuts - Pack (100/Pkg.)

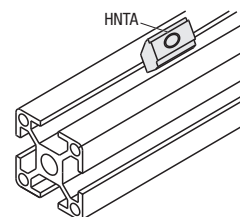


RoHS 10

Type	Main Body	Ball	Spring	Surface Treatment
PACK-HNTA	EN 1.0301 Equiv.	EN 1.4301 Equiv.	JIS-SWP-A	Trivalent Chromate
PACK-HNTASN	EN 1.4401 Equiv. (Sintered)	EN 1.4401 Equiv.	-	-



Example



Stoppers are sold separately. P718

Part Number		M				Unit Price (1 ~ 10 packages)	
Type	No.					Package Price	Price per Pkg.
PACK-HNTA	8	4	5	6			
PACK-HNTASN			8				
		4	5	6	8		

100 pcs. per package



Ordering Example  
Part Number - M  
PACK-HNTA8 - 8  
PACK-SHNTA8 - 6