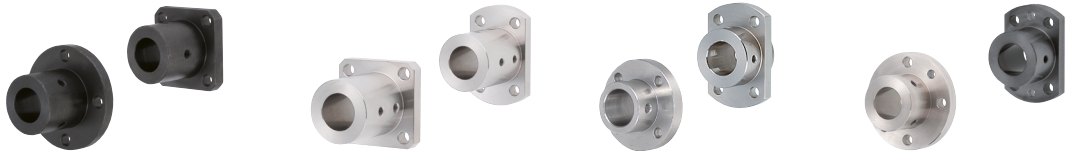


# Shaft Supports

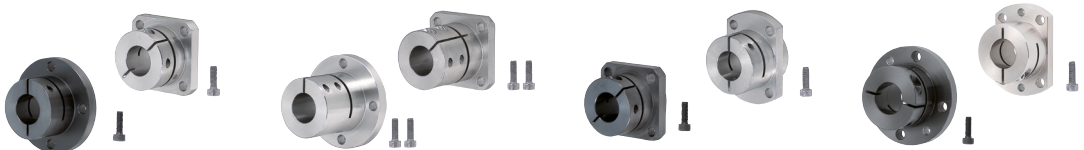
## Shaft Supports



Product Name	Flanged Mount - Standard	Standard / Long Sleeve Type	Standard With Pilot	Standard with Dowel Hole Type
Page	233	233	234	234



Product Name	Flanged Mount, Thick Sleeve - Standard	Wide / Long Sleeve Type	Wide with Pilot	Wide with Dowel Holes
Page	235	235	236	236



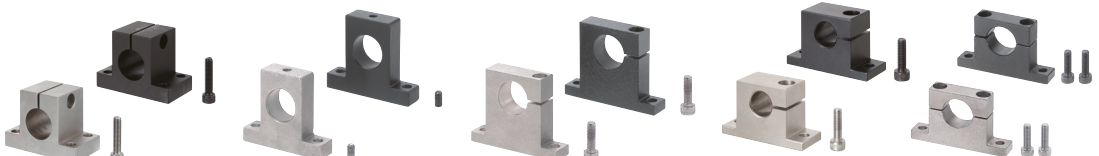
Product Name	Flanged Mount Slit - Standard	Slit Long Sleeve Type	With Slit Pilot	With Slit Dowel Holes
Page	237	237	238	238



Product Name	Flanged Mount - Compact Standard	Compact Long Sleeve Type	With Keyway	Back Mount
Page	239	239	239	240



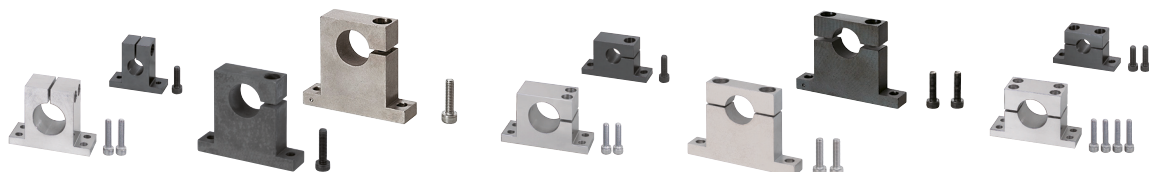
Product Name	Flanged Mount - Split	Flanged Slit (Cast) - Standard	Long Sleeve	T-Shaped Slit (Cast) - Standard
Page	240	241	241	242



Product Name	T-Shaped Slit (Cast) - Wide	T-Shaped (Cast) - Standard	Side Slit	Wide, Side Slit	T-Shaped Split (Cast) - Standard
Page	242	243	243	243	244



Product Name	T-Shaped Split (Cast) - Wide	T-Shaped Set Screw (Machined) - Standard / With Dowel Holes	Wide	T-Shaped Slit (Machined) - Standard / With Dowel Holes
Page	244	245	245	246



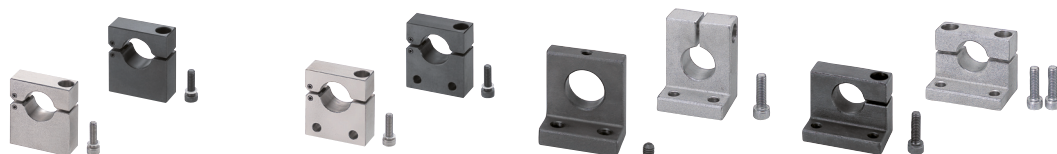
T-Shaped Slit (Machined) - Wide 246	T-Shaped Side Slit (Machined) - Standard 247	Wide 247	T-Shaped Side Split (Machined) - Standard 248	Wide 248
--	---	-------------	--	-------------



Compact (Machined) - Set Screw 249	Wide, Set Screw 249	Side Slit 249	Split 250
---------------------------------------	------------------------	------------------	--------------



Compact (Machined) - Wide Split 250	T-Shaped (Machined) - With Clamp Lever 251	Hinged Type 251	Hinged (Machined) - L-Shaped 252
--	---	--------------------	-------------------------------------



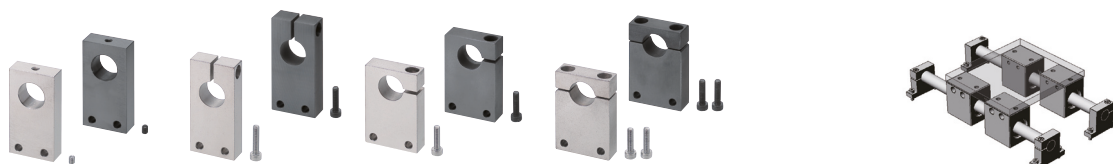
Hinged (Machined) - Bottom Mount 252	Side Mount 252	L-Shaped (Cast) - Standard / Slit / Side Slit / Split 253, 254
---	-------------------	---



L-Shaped (Machined) - Standard / Slit / Side Slit / Split 255, 256	Bottom Mount Set Screw (Machined) - Standard 257	Wide 257	Bottom Mount Slit (Machined) - Standard 258
---	---	-------------	--



Bottom Mount Slit (Machined) - Wide 258	Bottom Mount Split (Machined) - Standard 259	Wide 259	Bottom Mount (Machined) - Side Slit 260
--	---	-------------	--



Side Mount (Machined) - Standard 261	Slit 261	Side Slit 262	Split 262	Linear Unit 247, 248, 254
---	-------------	------------------	--------------	------------------------------