

# STANDARD SHIMS & SPACERS

<b>Construction Shims</b>	<b>68</b>
2-Slot ACH6 Series	<b>68</b>
<b>Metric Fitting Shims</b>	<b>69–76</b>
1-Slot ASH1 Series	<b>69</b>
1-Slot ASH1N Series	<b>70</b>
3-Slot ASH3 Series	<b>71</b>
3-Slot ASH3N Series	<b>72</b>
4-Slot ASH4 Series	<b>73</b>
4-Slot ASH4N Series	<b>74</b>
5-Slot ASH5 Series	<b>75</b>
6-Slot ASH6 Series	<b>76</b>
<b>Construction Spacers</b>	<b>77</b>
3-Slot ACS3S Series	<b>77</b>
<b>Spacers</b>	<b>78</b>
ACS6 Series	<b>78</b>
<b>Metric Fitting Spacers</b>	<b>79–88</b>
2-Slot ASP2 Series	<b>79</b>
3-Slot ASP3 Series	<b>80</b>
Short Slot (Small) ASP3S Series	<b>81</b>
4-Slot ASP4 Series	<b>82</b>
4-Slot ASP4N Series	<b>83</b>
3-Hole Components ASP4S Series	<b>84</b>
5-Slot ASP5 Series	<b>85</b>
6-Slot ASP6 Series	<b>86</b>
6-Slot ASP6N Series	<b>87</b>
2-Slot (Small) ASP6S Series	<b>88</b>
<b>Spacers for Shock Bracket</b>	<b>89</b>
ASP7 Series	<b>89</b>

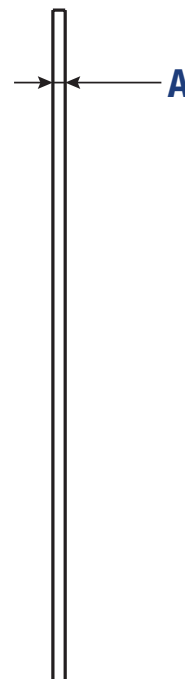
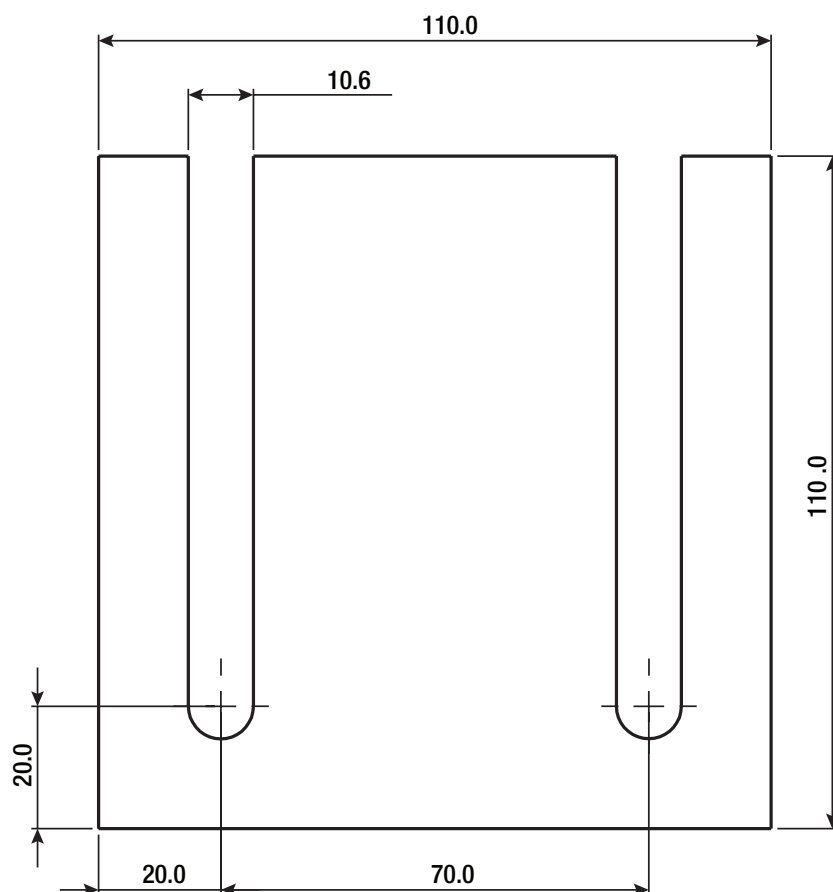


# Construction Shims

2-SLOT ACH6 SERIES SHIM



3D CAD is available online.



## Material

S.A.E. 1010  
Cold Rolled Steel

## 7 Piece / 5 mm Shim Set

Type	Single Piece	A (mm) (±0.03)	Surface Treatment	Shim Pack		
	NAAMS Code			Qty	Bulk Package	Kitting
ACH6* ACH6-KIT**	ACH602	0.25	None	2	ACH6	ACH6-KIT
	ACH605	0.50	Yellow Zinc Dichromate	3		
	ACH610	1.00	Black Oxide	1		
	ACH620	2.00	None	1		

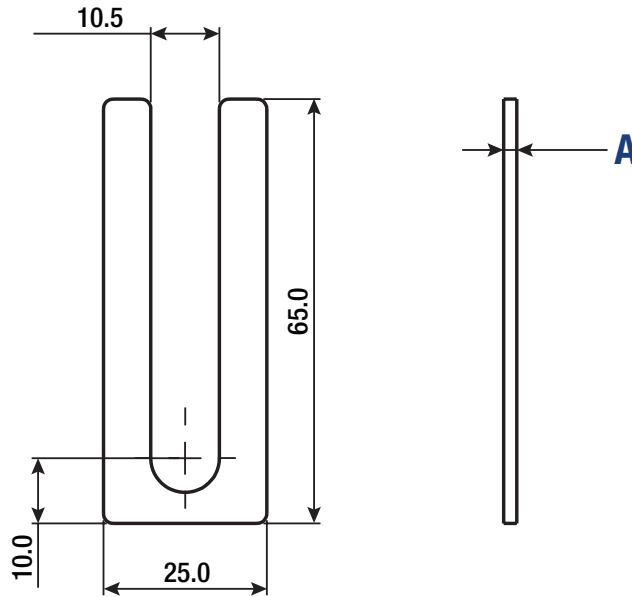
\*Pieces are packaged in bulk.

\*\*Pieces are packaged into individual kits.

Manufactured by Douglas Stamping Co.™

The Douglas Stamping Company™ logo is a trademark of Douglas Stamping Company.

3D CAD is available online.



Material
S.A.E. 1010 Cold Rolled Steel

7 Piece / 5 mm Shim Set						
Type	Single Piece	A (mm) (±0.03)	Surface Treatment	Shim Pack		
	NAAMS Code			Qty	Bulk Package	Kitting
ASH1* ASH1-KIT**	ASH102	0.25	None	2	ASH1	ASH1-KIT
	ASH105	0.50	Yellow Zinc Dichromate	3		
	ASH110	1.00	Black Oxide	1		
	ASH120	2.00	None	1		

\*Pieces are packaged in bulk.

\*\*Pieces are packaged into individual kits.

Manufactured by Douglas Stamping Co.™

The Douglas Stamping Company™ logo is a trademark of Douglas Stamping Company.

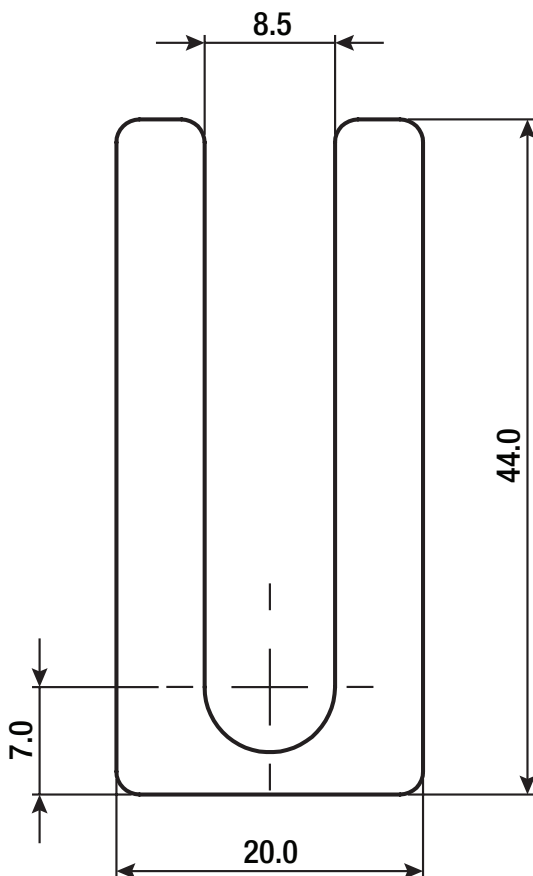
# Metric Fitting Shims

20 MM SERIES 1-SLOT ASH1N SERIES SHIM



3D CAD is available online.

Standard Shims & Spacers



## Material

S.A.E. 1010  
Cold Rolled Steel

## 7 Piece / 5 mm Shim Set

Type	Single Piece	A (mm) ( $\pm 0.03$ )	Surface Treatment	Shim Pack		
	NAAMS Code			Qty	Bulk Package	Kitting
ASH1N* ASH1N-KIT**	ASH102N	0.25	None	2	ASH1N	ASH1N-KIT
	ASH105N	0.50	Yellow Zinc Dichromate	3		
	ASH110N	1.00	Black Oxide	1		
	ASH120N	2.00	None	1		

\*Pieces are packaged in bulk.

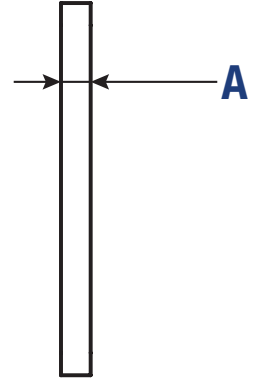
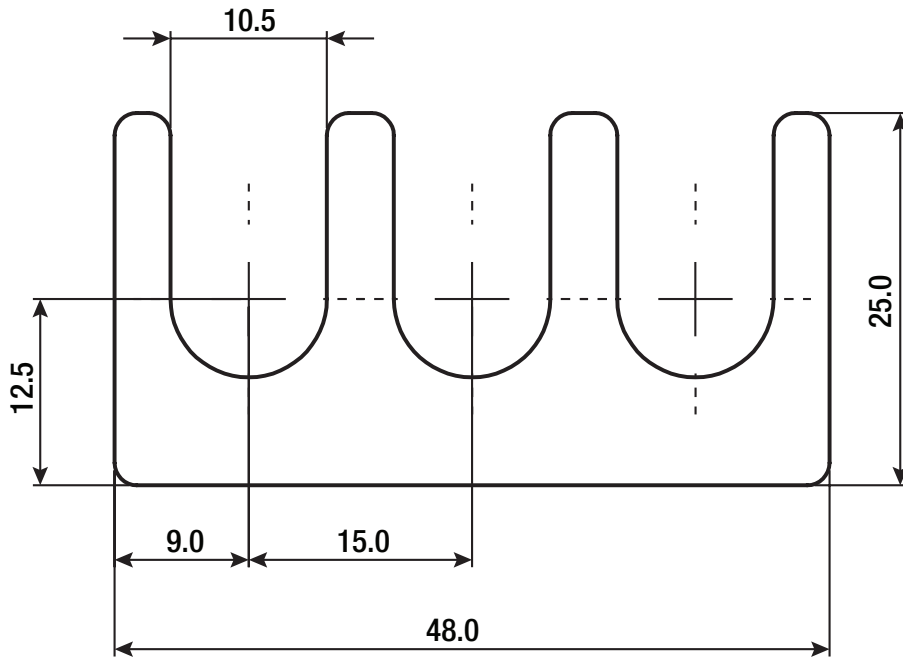
\*\*Pieces are packaged into individual kits.

Manufactured by Douglas Stamping Co.™

The Douglas Stamping Company™ logo is a trademark of Douglas Stamping Company.



3D CAD is available online.



### Material

S.A.E. 1010  
Cold Rolled Steel

### 7 Piece / 5 mm Shim Set

Type	Single Piece	A (mm) (±0.03)	Surface Treatment	Shim Pack		
	NAAMS Code			Qty	Bulk Package	Kitting
ASH3* ASH3-KIT**	ASH302	0.25	None	2	ASH3	ASH3-KIT
	ASH305	0.50	Yellow Zinc Dichromate	3		
	ASH310	1.00	Black Oxide	1		
	ASH320	2.00	None	1		

\*Pieces are packaged in bulk.

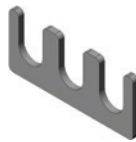
\*\*Pieces are packaged into individual kits.

**Manufactured by Douglas Stamping Co.™**

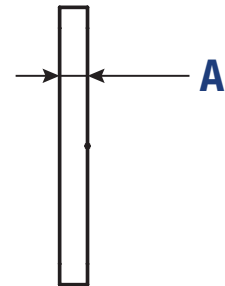
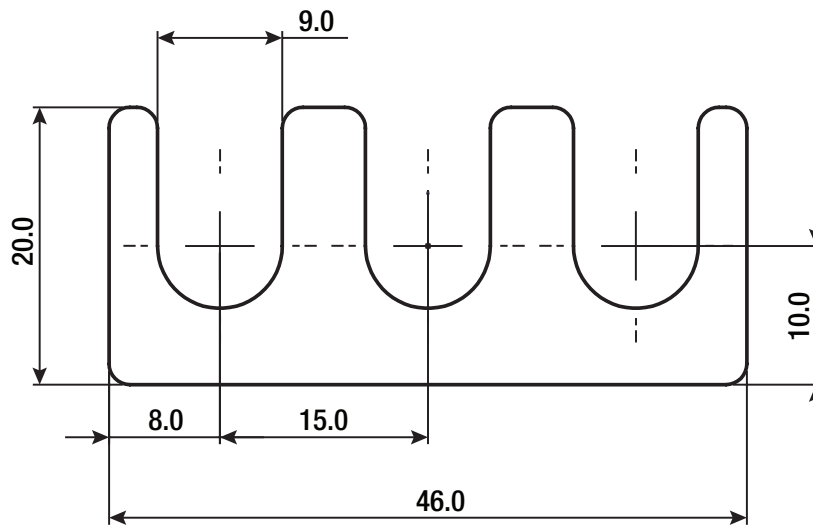
The Douglas Stamping Company™ logo is a trademark of Douglas Stamping Company.

# Metric Fitting Shims

## 20 MM SERIES 3-SLOT ASH3N SERIES SHIM



3D CAD is available online.



### Material

S.A.E. 1010  
Cold Rolled Steel

### 7 Piece / 5 mm Shim Set

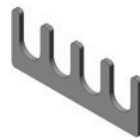
Type	Single Piece	A (mm) (±0.03)	Surface Treatment	Shim Pack		
	NAAMS Code			Qty	Bulk Package	Kitting
ASH3N* ASH3N-KIT**	ASH302N	0.25	None	2	ASH3N	ASH3N-KIT
	ASH305N	0.50	Yellow Zinc Dichromate	3		
	ASH310N	1.00	Black Oxide	1		
	ASH320N	2.00	None	1		

\*Pieces are packaged in bulk.

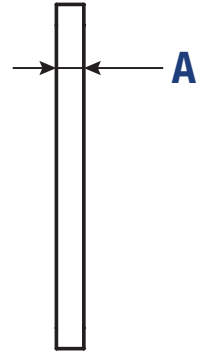
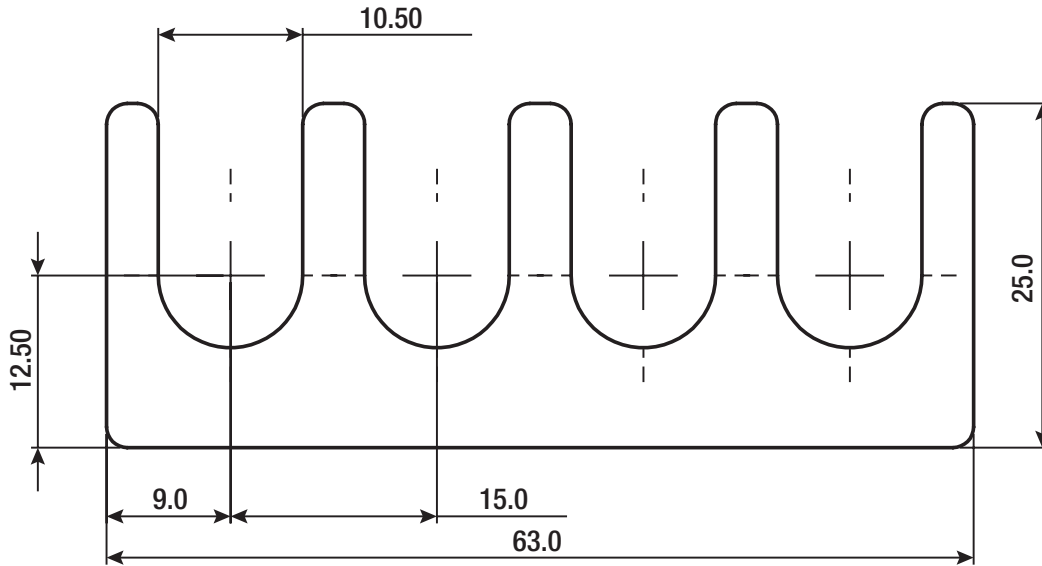
\*\*Pieces are packaged into individual kits.

Manufactured by Douglas Stamping Co.™

The Douglas Stamping Company™ logo is a trademark of Douglas Stamping Company.



3D CAD is available online.



### Material

S.A.E. 1010  
Cold Rolled Steel

### 7 Piece / 5 mm Shim Set

Type	Single Piece	A (mm) (±0.03)	Surface Treatment	Shim Pack		
	NAAMS Code			Qty	Bulk Package	Kitting
ASH4* ASH4-KIT**	ASH402	0.25	None	2	ASH4	ASH4-KIT
	ASH405	0.50	Yellow Zinc Dichromate	3		
	ASH410	1.00	Black Oxide	1		
	ASH420	2.00	None	1		

\*Pieces are packaged in bulk.

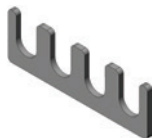
\*\*Pieces are packaged into individual kits.

Manufactured by Douglas Stamping Co.™

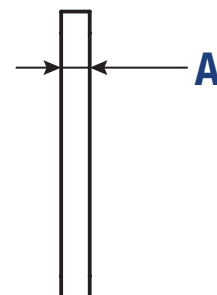
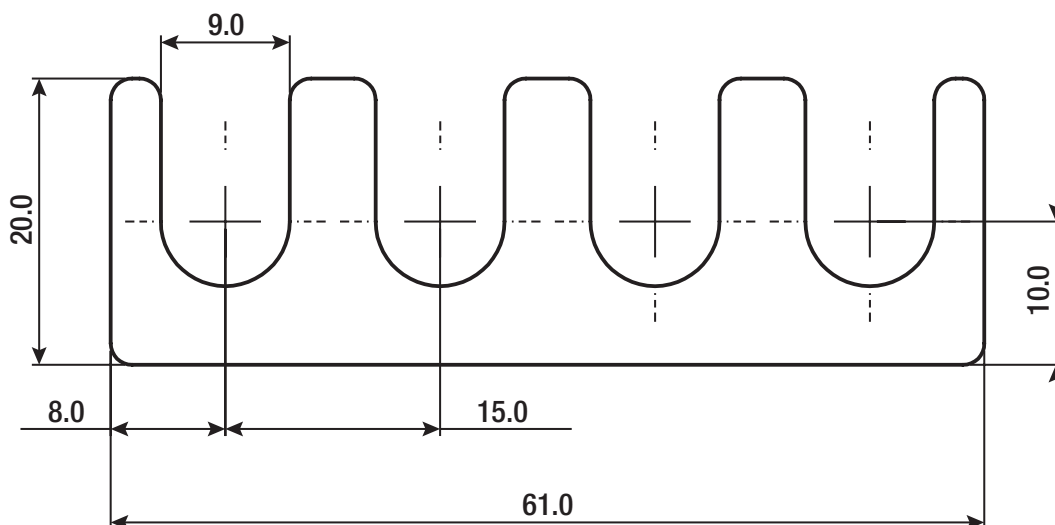
The Douglas Stamping Company™ logo is a trademark of Douglas Stamping Company.

# Metric Fitting Shims

20 MM SERIES 4-SLOT ASH4N SERIES SHIM



3D CAD is available online.



## Material

S.A.E. 1010  
Cold Rolled Steel

## 7 Piece / 5 mm Shim Set

Type	Single Piece	A (mm) (±0.03)	Surface Treatment	Shim Pack		
	NAAMS Code			Qty	Bulk Package	Kitting
ASH4N* ASH4N-KIT**	ASH402N	0.25	None	2	ASH4N	ASH4N-KIT
	ASH405N	0.50	Yellow Zinc Dichromate	3		
	ASH410N	1.00	Black Oxide	1		
	ASH420N	2.00	None	1		

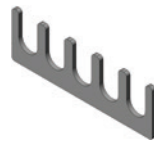
\*Pieces are packaged in bulk.

\*\*Pieces are packaged into individual kits.

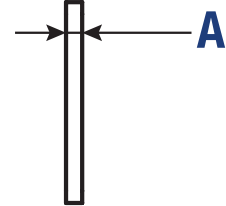
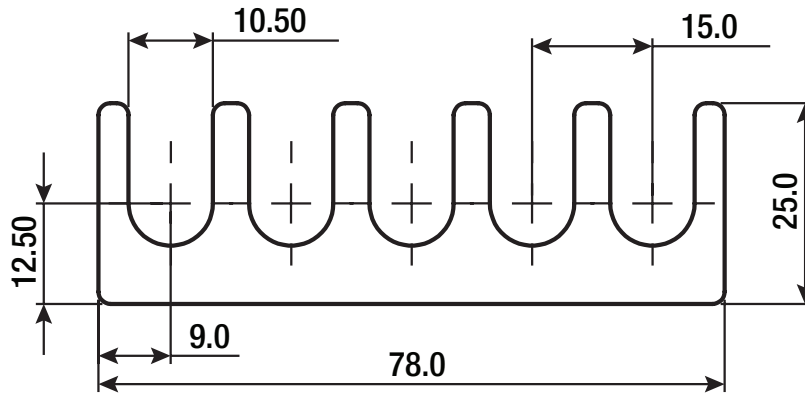
Manufactured by Douglas Stamping Co.™

The Douglas Stamping Company™ logo is a trademark of Douglas Stamping Company.





3D CAD is available online.



### Material

S.A.E. 1010  
Cold Rolled Steel

### 7 Piece / 5 mm Shim Set

Type	Single Piece	A (mm) (±0.03)	Surface Treatment	Shim Pack		
	NAAMS Code			Qty	Bulk Package	Kitting
ASH5* ASH5-KIT**	ASH502	0.25	None	2	ASH5	ASH5-KIT
	ASH505	0.50	Yellow Zinc Dichromate	3		
	ASH510	1.00	Black Oxide	1		
	ASH520	2.00	None	1		

\*Pieces are packaged in bulk.

\*\*Pieces are packaged into individual kits.

Manufactured by Douglas Stamping Co.™

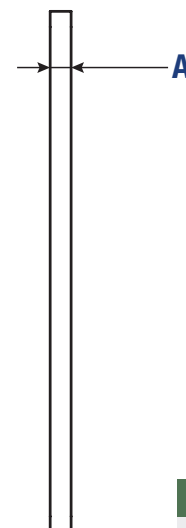
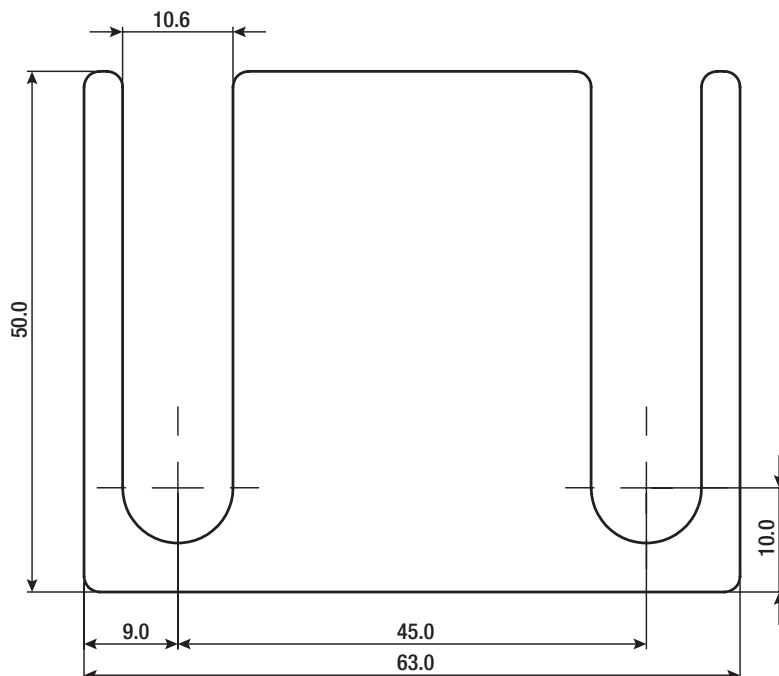
The Douglas Stamping Company™ logo is a trademark of Douglas Stamping Company.

# Metric Fitting Shims

## 2-SLOT ASH6 SERIES SHIM



3D CAD is available online.



### Material

S.A.E. 1010  
Cold Rolled Steel

### 7 Piece / 5 mm Shim Set

Type	Single Piece	A (mm) (±0.03)	Surface Treatment	Shim Pack		
	NAAMS Code			Qty	Bulk Package	Kitting
ASH6* ASH6-KIT**	ASH602	0.25	None	2	ASH6	ASH6-KIT
	ASH605	0.50	Yellow Zinc Dichromate	3		
	ASH610	1.00	Black Oxide	1		
	ASH620	2.00	None	1		

\*Pieces are packaged in bulk.

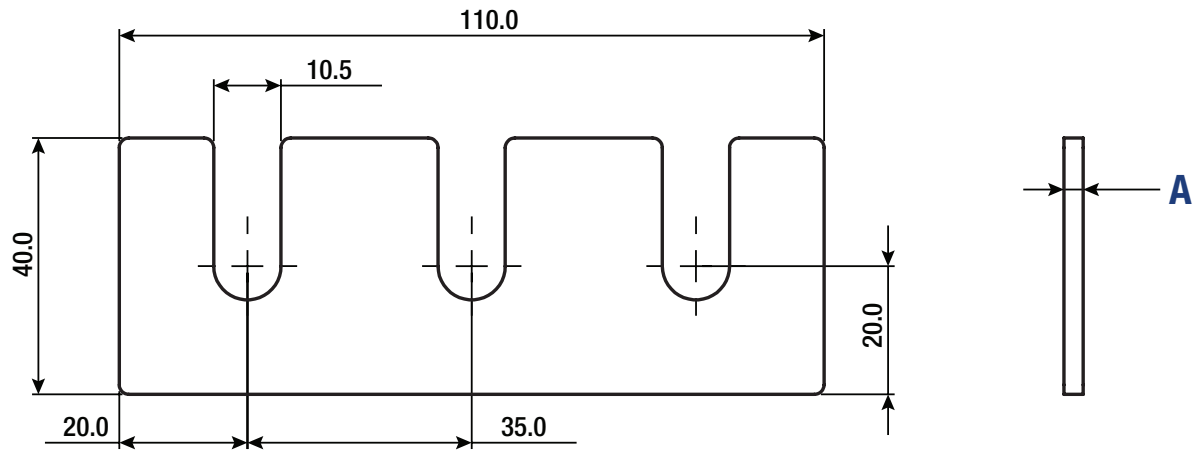
\*\*Pieces are packaged into individual kits.

Manufactured by Douglas Stamping Co.™

The Douglas Stamping Company™ logo is a trademark of Douglas Stamping Company.



3D CAD is available online.



Type	Material	Finish	Add. Notes
ACS3S	Cold Rolled Steel S.A.E. 1018 Precision Ground	Black Oxide	Holes are centered unless otherwise noted

NAAMS Code	A (mm) (±0.03)
ACS330S	3.00
ACS332S	3.20
ACS334S	3.40
ACS336S	3.60
ACS338S	3.80
ACS340S	4.00
ACS342S	4.20

NAAMS Code	A (mm) (±0.03)
ACS344S	4.40
ACS346S	4.60
ACS348S	4.80
ACS350S	5.00
ACS352S	5.20
ACS354S	5.40
ACS356S	5.60

NAAMS Code	A (mm) (±0.03)
ACS358S	5.80
ACS360S	6.00
ACS362S	6.20
ACS364S	6.40
ACS366S	6.60
ACS368S	6.80
ACS370S	7.00

Manufactured by Douglas Stamping Co.™

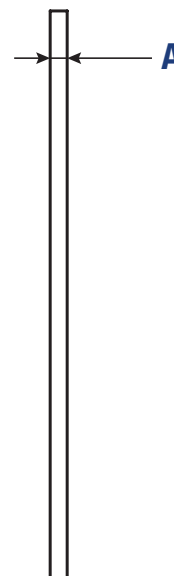
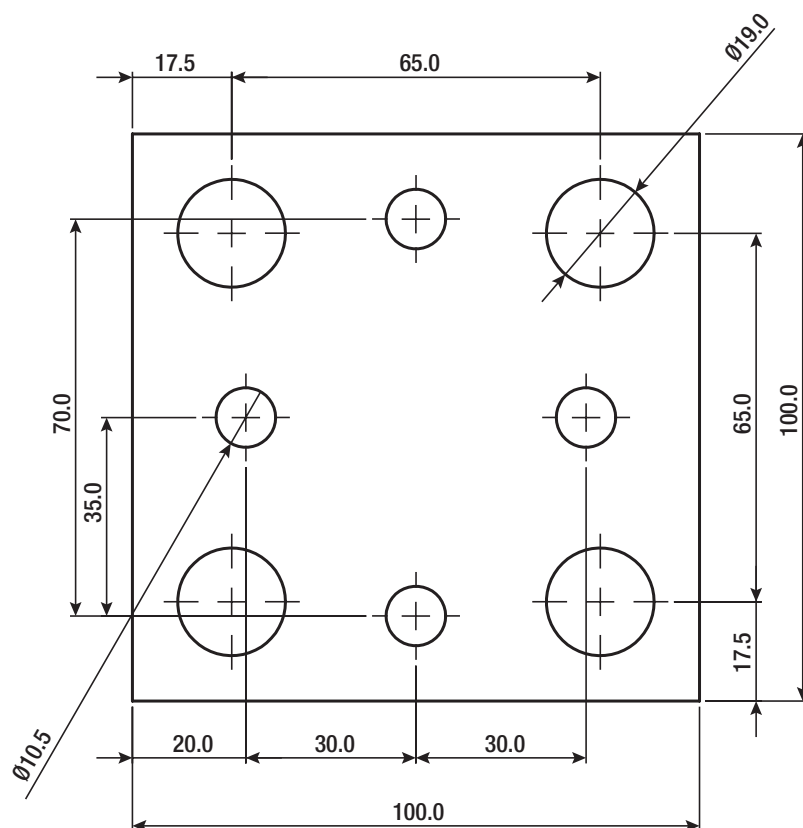
The Douglas Stamping Company™ logo is a trademark of Douglas Stamping Company.

# Spacers

FOR 60 x 60 & 70 x 70 MOUNTING ACS6 SERIES SPACERS



3D CAD is available online.



Type	Material	Finish	Add. Notes
ACS6	Cold Rolled Steel S.A.E. 1018 Precision Ground	Black Oxide	Holes are centered unless otherwise noted

NAAMS Code	A (mm) (±0.03)
ACS630	3.00
ACS632	3.20
ACS634	3.40
ACS636	3.60
ACS638	3.80
ACS640	4.00
ACS642	4.20

NAAMS Code	A (mm) (±0.03)
ACS644	4.40
ACS646	4.60
ACS648	4.80
ACS650	5.00
ACS652	5.20
ACS654	5.40
ACS656	5.60

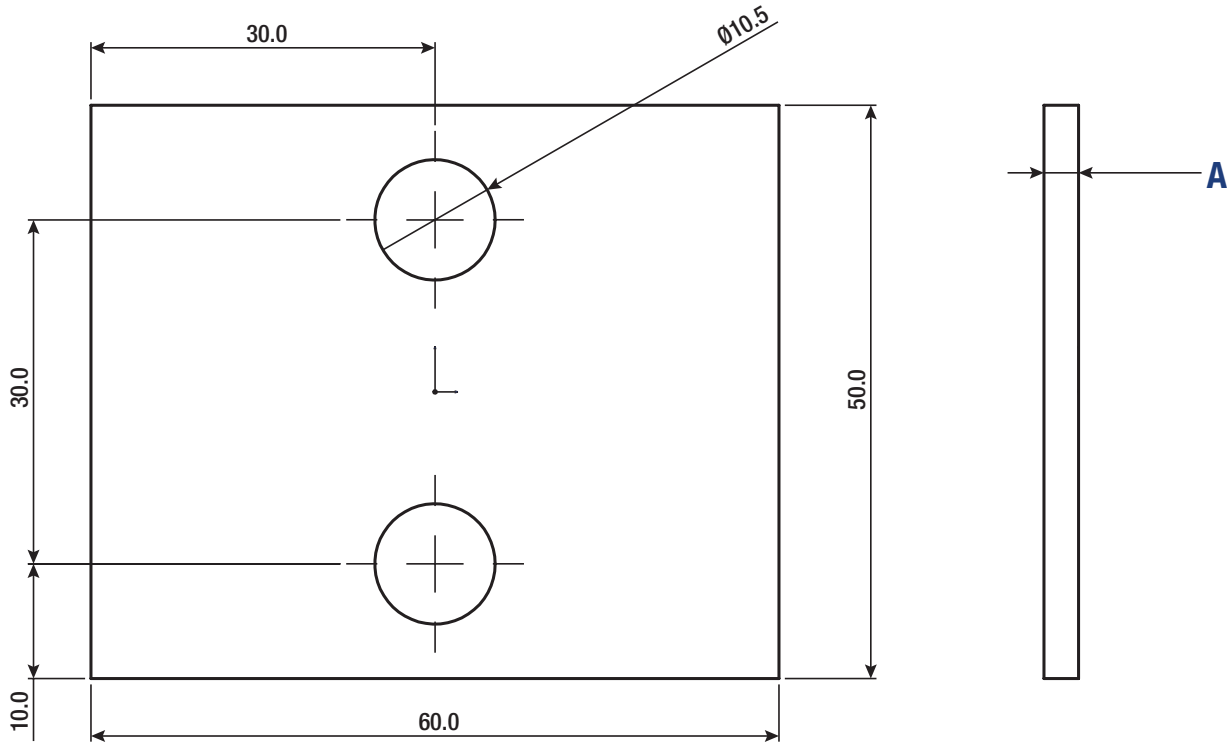
NAAMS Code	A (mm) (±0.03)
ACS658	5.80
ACS660	6.00
ACS662	6.20
ACS664	6.40
ACS666	6.60
ACS668	6.80
ACS670	7.00

Manufactured by Douglas Stamping Co.™

The Douglas Stamping Company™ logo is a trademark of Douglas Stamping Company.



3D CAD is available online.



Type	Material	Finish	Add. Notes
ASP2	Cold Rolled Steel S.A.E. 1018 Precision Ground	Black Oxide	Holes are centered unless otherwise noted

NAAMS Code	A (mm) (±0.03)	NAAMS Code	A (mm) (±0.03)	NAAMS Code	A (mm) (±0.03)
ASP230	3.00	ASP244	4.40	ASP258	5.80
ASP232	3.20	ASP246	4.60	ASP260	6.00
ASP234	3.40	ASP248	4.80	ASP262	6.20
ASP236	3.60	ASP250	5.00	ASP264	6.40
ASP238	3.80	ASP252	5.20	ASP266	6.60
ASP240	4.00	ASP254	5.40	ASP268	6.80
ASP242	4.20	ASP256	5.60	ASP270	7.00

Manufactured by Douglas Stamping Co.™

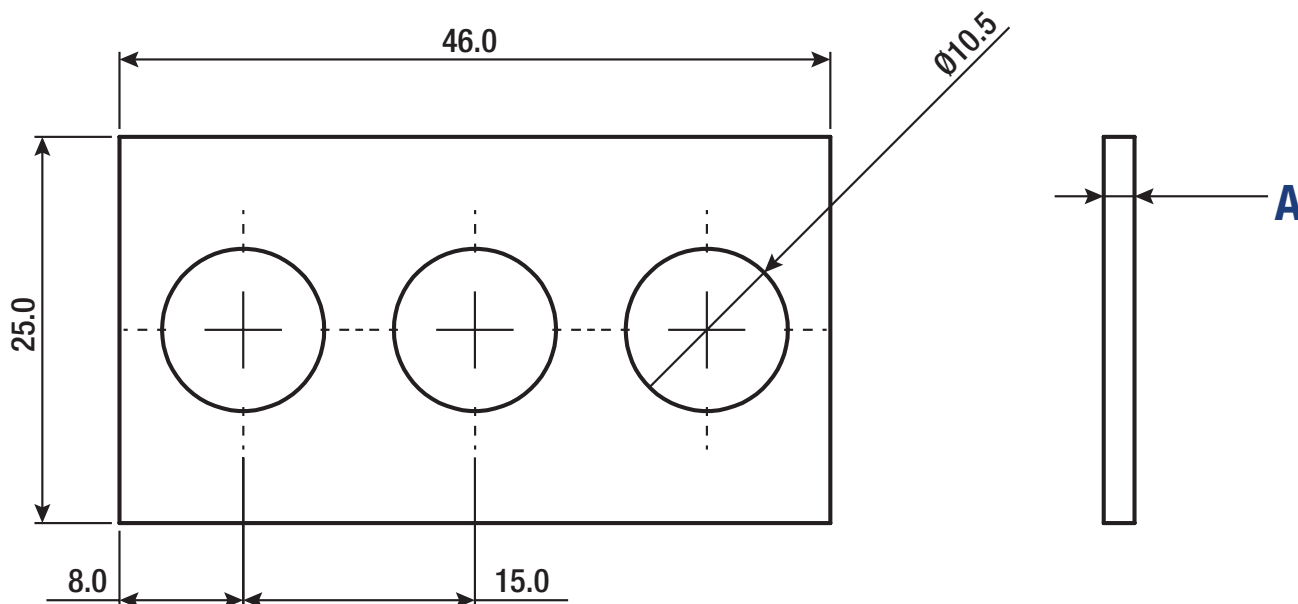
The Douglas Stamping Company™ logo is a trademark of Douglas Stamping Company.

# Metric Fitting Spacers

## 3-HOLE ASP3 SERIES SPACERS



3D CAD is available online.



Type	Material	Finish	Add. Notes
ASP3	Cold Rolled Steel S.A.E. 1018 Precision Ground	Black Oxide	Holes are centered unless otherwise noted

NAAMS Code	A (mm) (±0.03)
ASP330	3.00
ASP332	3.20
ASP334	3.40
ASP336	3.60
ASP338	3.80
ASP340	4.00
ASP342	4.20

NAAMS Code	A (mm) (±0.03)
ASP344	4.40
ASP346	4.60
ASP348	4.80
ASP350	5.00
ASP352	5.20
ASP354	5.40
ASP356	5.60

NAAMS Code	A (mm) (±0.03)
ASP358	5.80
ASP360	6.00
ASP362	6.20
ASP364	6.40
ASP366	6.60
ASP368	6.80
ASP370	7.00

Manufactured by Douglas Stamping Co.™

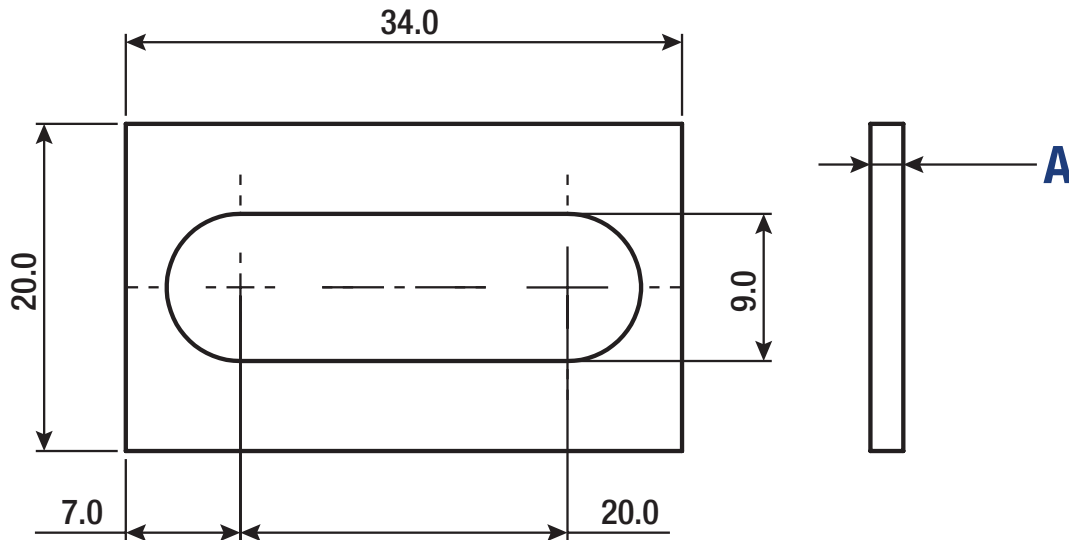
The Douglas Stamping Company™ logo is a trademark of Douglas Stamping Company.



# Metric Fitting Spacers

## SHORT SLOT (SMALL) ASP3S SERIES SPACERS

3D CAD is available online.



Type	Material	Finish	Add. Notes
ASP3S	Cold Rolled Steel S.A.E. 1018 Precision Ground	Black Oxide	Holes are centered unless otherwise noted

NAAMS Code	A (mm) (±0.03)
ASP330S	3.00
ASP332S	3.20
ASP334S	3.40
ASP336S	3.60
ASP338S	3.80
ASP340S	4.00
ASP342S	4.20

NAAMS Code	A (mm) (±0.03)
ASP344S	4.40
ASP346S	4.60
ASP348S	4.80
ASP350S	5.00
ASP352S	5.20
ASP354S	5.40
ASP356S	5.60

NAAMS Code	A (mm) (±0.03)
ASP358S	5.80
ASP360S	6.00
ASP362S	6.20
ASP364S	6.40
ASP366S	6.60
ASP368S	6.80
ASP370S	7.00

Manufactured by Douglas Stamping Co.™

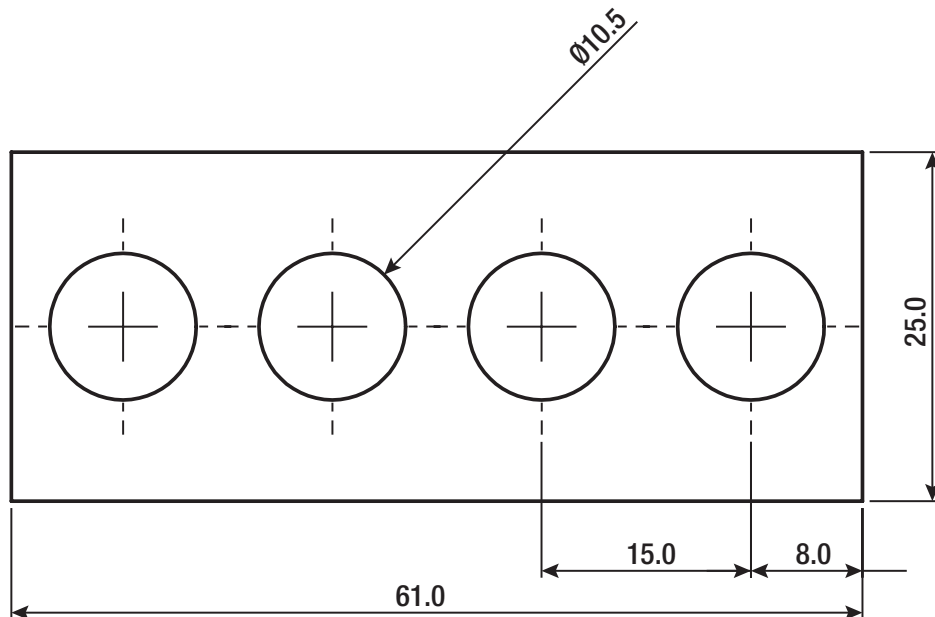
The Douglas Stamping Company™ logo is a trademark of Douglas Stamping Company.

# Metric Fitting Spacers

## 4-HOLE ASP4 SERIES SPACERS



3D CAD is available online.



Type	Material	Finish	Add. Notes
ASP4	Cold Rolled Steel S.A.E. 1018 Precision Ground	Black Oxide	Holes are centered unless otherwise noted

NAAMS Code	A (mm) (±0.03)
ASP430	3.00
ASP432	3.20
ASP434	3.40
ASP436	3.60
ASP438	3.80
ASP440	4.00
ASP442	4.20

NAAMS Code	A (mm) (±0.03)
ASP444	4.40
ASP446	4.60
ASP448	4.80
ASP450	5.00
ASP452	5.20
ASP454	5.40
ASP456	5.60

NAAMS Code	A (mm) (±0.03)
ASP458	5.80
ASP460	6.00
ASP462	6.20
ASP464	6.40
ASP466	6.60
ASP468	6.80
ASP470	7.00

Manufactured by Douglas Stamping Co.™

The Douglas Stamping Company™ logo is a trademark of Douglas Stamping Company.

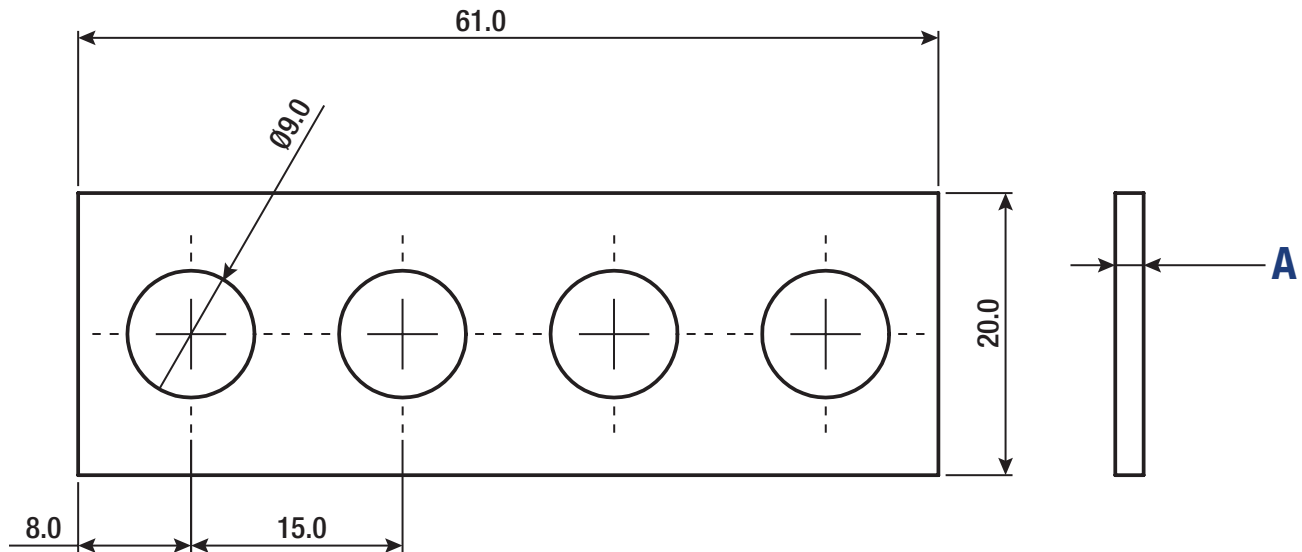




# Metric Fitting Spacers

## 20 MM SERIES 4-HOLE ASP4N SERIES SPACERS

3D CAD is available online.



Type	Material	Finish	Add. Notes
ASP4N	Cold Rolled Steel S.A.E. 1018 Precision Ground	Black Oxide	Holes are centered unless otherwise noted

NAAMS Code	A (mm) (±0.03)
ASP430N	3.00
ASP432N	3.20
ASP434N	3.40
ASP436N	3.60
ASP438N	3.80
ASP440N	4.00
ASP442N	4.20

NAAMS Code	A (mm) (±0.03)
ASP444N	4.40
ASP446N	4.60
ASP448N	4.80
ASP450N	5.00
ASP452N	5.20
ASP454N	5.40
ASP456N	5.60

NAAMS Code	A (mm) (±0.03)
ASP458N	5.80
ASP460N	6.00
ASP462N	6.20
ASP464N	6.40
ASP466N	6.60
ASP468N	6.80
ASP470N	7.00

Manufactured by Douglas Stamping Co.™

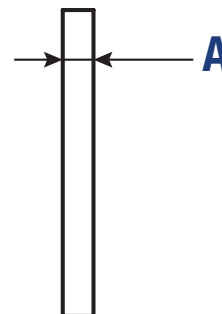
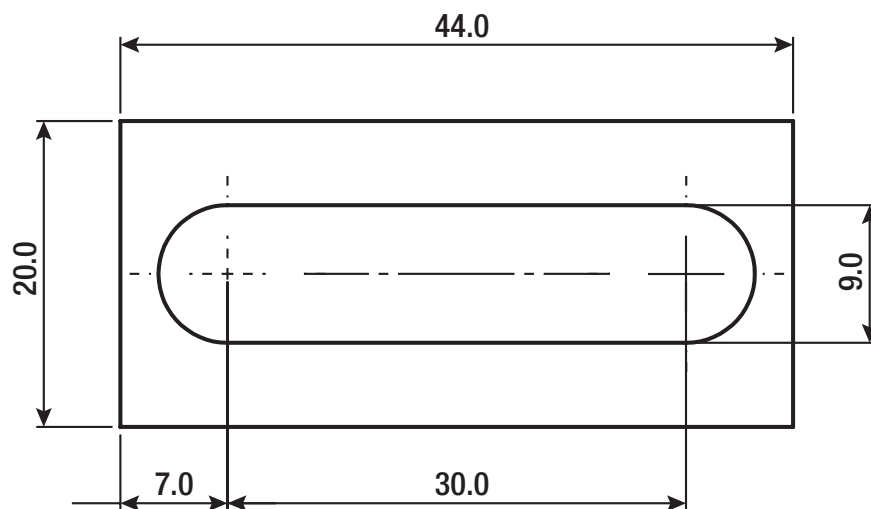
The Douglas Stamping Company™ logo is a trademark of Douglas Stamping Company.

# Metric Fitting Spacers

20 MM SERIES FOR 3-HOLE COMPONENTS ASP4S SERIES SPACERS



3D CAD is available online.



Type	Material	Finish	Add. Notes
ASP4S	Cold Rolled Steel S.A.E. 1018 Precision Ground	Black Oxide	Holes are centered unless otherwise noted

NAAMS Code	A (mm) (±0.03)
ASP430S	3.00
ASP432S	3.20
ASP434S	3.40
ASP436S	3.60
ASP438S	3.80
ASP440S	4.00
ASP442S	4.20

NAAMS Code	A (mm) (±0.03)
ASP444S	4.40
ASP446S	4.60
ASP448S	4.80
ASP450S	5.00
ASP452S	5.20
ASP454S	5.40
ASP456S	5.60

NAAMS Code	A (mm) (±0.03)
ASP458S	5.80
ASP460S	6.00
ASP462S	6.20
ASP464S	6.40
ASP466S	6.60
ASP468S	6.80
ASP470S	7.00

Manufactured by Douglas Stamping Co.™

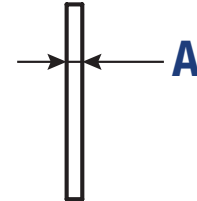
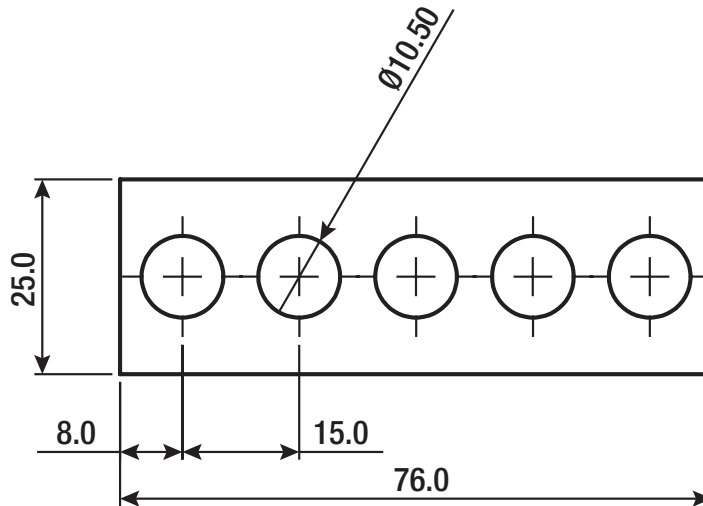
The Douglas Stamping Company™ logo is a trademark of Douglas Stamping Company.



# Metric Fitting Spacers

## 5-HOLE ASP5 SERIES SPACERS

3D CAD is available online.



Type	Material	Finish	Add. Notes
ASP5	Cold Rolled Steel S.A.E. 1018 Precision Ground	Black Oxide	Holes are centered unless otherwise noted

NAAMS Code	A (mm) (±0.03)
ASP530	3.00
ASP532	3.20
ASP534	3.40
ASP536	3.60
ASP538	3.80
ASP540	4.00
ASP542	4.20

NAAMS Code	A (mm) (±0.03)
ASP544	4.40
ASP546	4.60
ASP548	4.80
ASP550	5.00
ASP552	5.20
ASP554	5.40
ASP556	5.60

NAAMS Code	A (mm) (±0.03)
ASP558	5.80
ASP560	6.00
ASP562	6.20
ASP564	6.40
ASP566	6.60
ASP568	6.80
ASP570	7.00

Manufactured by Douglas Stamping Co.™

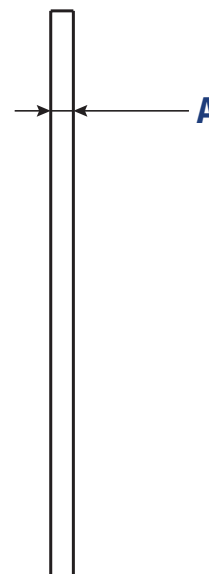
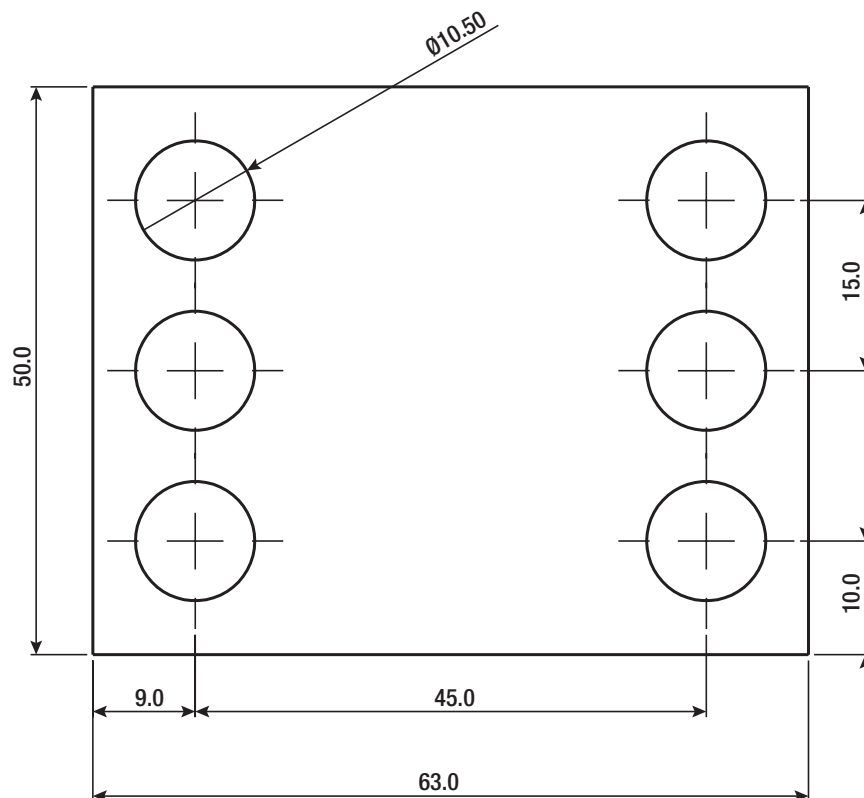
The Douglas Stamping Company™ logo is a trademark of Douglas Stamping Company.

# Metric Fitting Spacer

6-HOLE ASP6 SERIES SPACERS



3D CAD is available online.



Type	Material	Finish	Add. Notes
ASP6	Cold Rolled Steel S.A.E. 1018 Precision Ground	Black Oxide	Holes are centered unless otherwise noted

NAAMS Code	A (mm) (±0.03)
ASP630	3.00
ASP632	3.20
ASP634	3.40
ASP636	3.60
ASP638	3.80
ASP640	4.00
ASP642	4.20

NAAMS Code	A (mm) (±0.03)
ASP644	4.40
ASP646	4.60
ASP648	4.80
ASP650	5.00
ASP652	5.20
ASP654	5.40
ASP656	5.60

NAAMS Code	A (mm) (±0.03)
ASP658	5.80
ASP660	6.00
ASP662	6.20
ASP664	6.40
ASP666	6.60
ASP668	6.80
ASP670	7.00

Manufactured by Douglas Stamping Co.™

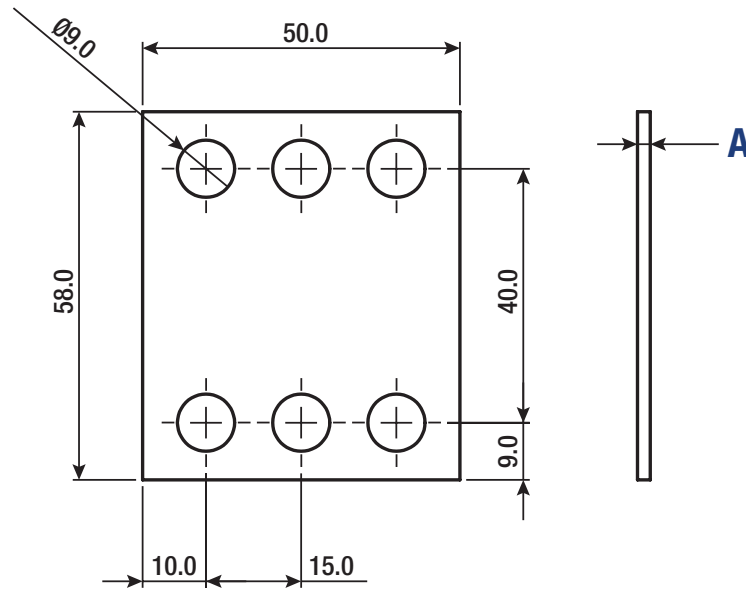
The Douglas Stamping Company™ logo is a trademark of Douglas Stamping Company.



# Metric Fitting Spacer

20 MM 6-HOLE ASP6N SERIES SPACERS

3D CAD is available online.



Type	Material	Finish	Add. Notes
ASP6N	Cold Rolled Steel S.A.E. 1018 Precision Ground	Black Oxide	Holes are centered unless otherwise noted

NAAMS Code	A (mm) (±0.03)	NAAMS Code	A (mm) (±0.03)	NAAMS Code	A (mm) (±0.03)
ASP630N	3.00	ASP644N	4.40	ASP658N	5.80
ASP632N	3.20	ASP646N	4.60	ASP660N	6.00
ASP634N	3.40	ASP648N	4.80	ASP662N	6.20
ASP636N	3.60	ASP650N	5.00	ASP664N	6.40
ASP638N	3.80	ASP652N	5.20	ASP666N	6.60
ASP640N	4.00	ASP654N	5.40	ASP668N	6.80
ASP642N	4.20	ASP656N	5.60	ASP670N	7.00

Manufactured by Douglas Stamping Co.™

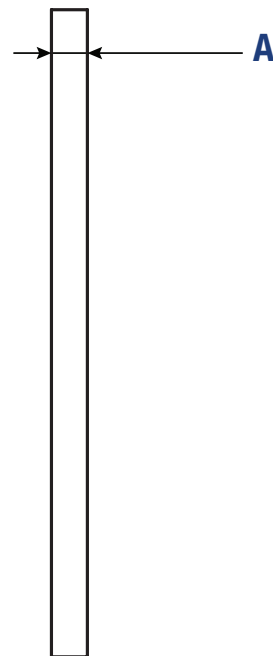
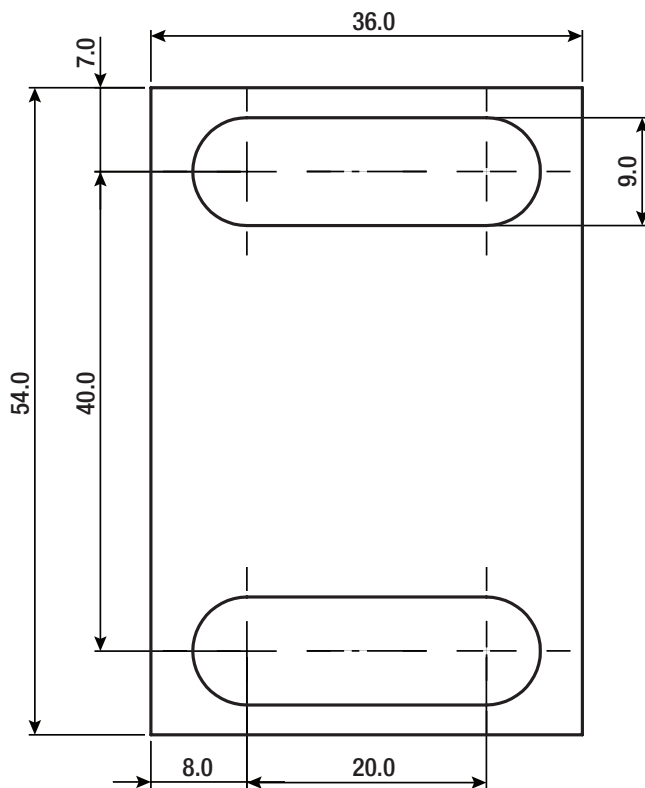
The Douglas Stamping Company™ logo is a trademark of Douglas Stamping Company.

# Metric Fitting Spacers

2-SLOT (SMALL) ASP6S SERIES SPACERS



3D CAD is available online.



Type	Material	Finish	Add. Notes
ASP6S	Cold Rolled Steel S.A.E. 1018 Precision Ground	Black Oxide	Holes are centered unless otherwise noted

NAAMS Code	A (mm) (±0.03)
ASP630S	3.00
ASP632S	3.20
ASP634S	3.40
ASP636S	3.60
ASP638S	3.80
ASP640S	4.00
ASP642S	4.20

NAAMS Code	A (mm) (±0.03)
ASP644S	4.40
ASP646S	4.60
ASP648S	4.80
ASP650S	5.00
ASP652S	5.20
ASP654S	5.40
ASP656S	5.60

NAAMS Code	A (mm) (±0.03)
ASP658S	5.80
ASP660S	6.00
ASP662S	6.20
ASP664S	6.40
ASP666S	6.60
ASP668S	6.80
ASP670S	7.00

Manufactured by Douglas Stamping Co.™

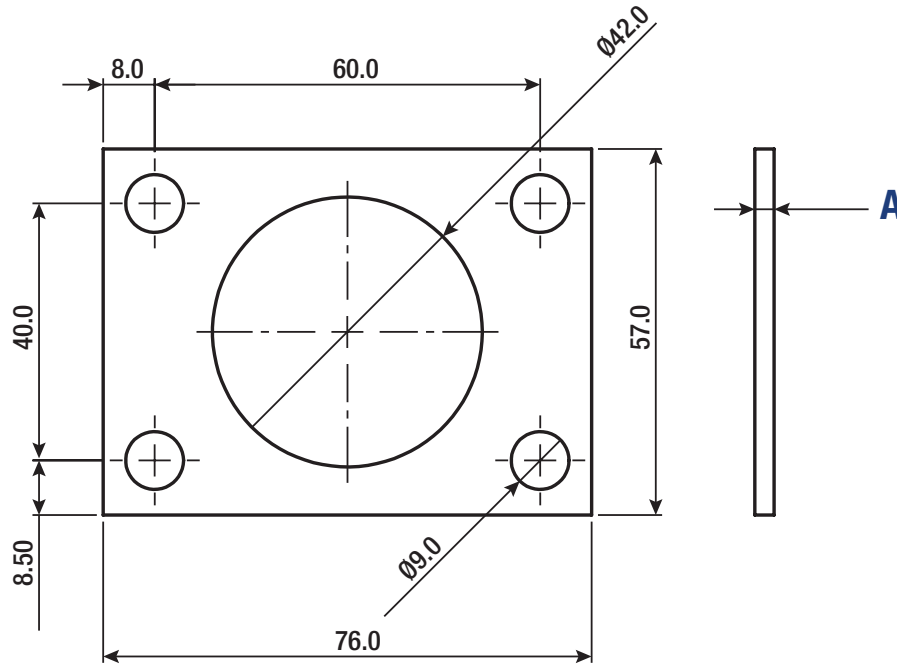
The Douglas Stamping Company™ logo is a trademark of Douglas Stamping Company.



# Spacer for Shock Bracket

ASP7 SERIES SPACERS

3D CAD is available online.



Type	Material	Finish	Add. Notes
ASP7	Cold Rolled Steel S.A.E. 1018 Precision Ground	Black Oxide	Holes are centered unless otherwise noted

NAAMS Code	A (mm) (±0.03)
ASP730	3.00
ASP732	3.20
ASP734	3.40
ASP736	3.60
ASP738	3.80
ASP740	4.00
ASP742	4.20

NAAMS Code	A (mm) (±0.03)
ASP744	4.40
ASP746	4.60
ASP748	4.80
ASP750	5.00
ASP752	5.20
ASP754	5.40
ASP756	5.60

NAAMS Code	A (mm) (±0.03)
ASP758	5.80
ASP760	6.00
ASP762	6.20
ASP764	6.40
ASP766	6.60
ASP768	6.80
ASP770	7.00

Manufactured by Douglas Stamping Co.™

The Douglas Stamping Company™ logo is a trademark of Douglas Stamping Company.

