

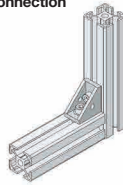
Blind Joints - Overview

For 8-45 Series (Slot Width 10mm) Aluminum Extrusions

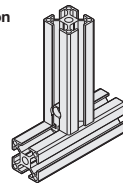
Features of Blind Joints

Connection inside of the extrusions provides good appearance.
Also convenient where interference inside of the corners are not desired or panels need to be inserted into the extrusion slots.




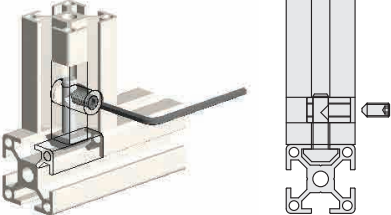
Bracket Connection



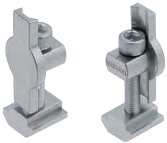
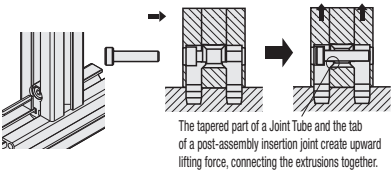
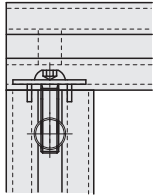
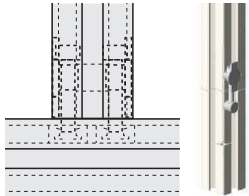


Blind Joint Connection



Product List

Product Name	Screw Joints				Center Joints			
Product Photo								
Features	• Joint Plate enables secure and economical connection.				• Most standard Blind Joints usable with various types of aluminum extrusions.			
Installation Diagram								
Material	Steel or EN 1.4301 Equiv.				EN 1.4308 Equiv.			
Representative Type	HCJ				HMJ			
Applicable Extrusion No.	5	6	8	8-45	5	6	8	8-45
Page	P.706				P.708			
Alterations (pages) required for extrusions	Tapping / Wrench Hole P.757, 759				M Type Hole P.766			

Product Name	Post-Assembly Insertion Double Joints				Single Joints		Pre-Assembly Insertion Double Joints	
Product Photo								
Features	• Connects securely at two locations. Tightest connection can be achieved of all Blind Joints.				• D type holes added on the extrusions do not penetrate to the flat surface. Blind Joints with very good appearance.		• Can be used for various applications such as to extend extrusions as well as mounting to plates.	
Installation Diagram	 <p>The tapered part of a Joint Tube and the tab of a post-assembly insertion joint create upward lifting force, connecting the extrusions together.</p>							
Material	EN 1.4308 Equiv. / EN 1.4301 Equiv.				Steel or EN 1.4301 Equiv.		EN 1.4401 Equiv. / EN 1.4301 Equiv.	
Representative Type	HPJN				HSJ		HDJSN	
Applicable Extrusion No.	5	6	8	8-45	6	8	8-45	8-45
Page	P.710				P.707		P.709	
Alterations (pages) required for extrusions	M Type Hole P.766				Wrench Hole / D Type Hole P.759, 764		S Type Hole P.765	

Blind Joint Components

Screw Joints for 8-45 Series (Slot Width 10mm) Aluminum Extrusions

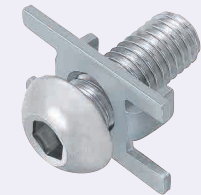
For details of fastening method, see **P603**.
Alterations necessary to use this component

Tapping
P.757

Wrench Hole
P.759

■ **Features:** Cost saving blind joints. Including Rotation Stoppers.

■ Screw Joints



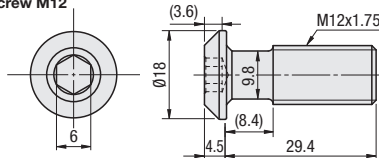
(Reference) Corner section when using this joint

RoHS 10

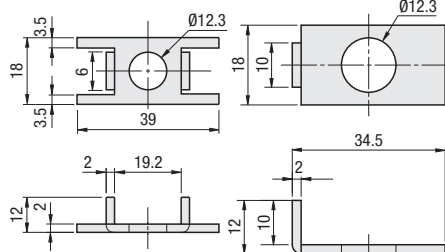
HCJ (Trivalent Chromate)

(A) Screw

Screw M12



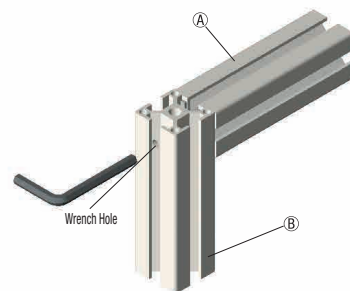
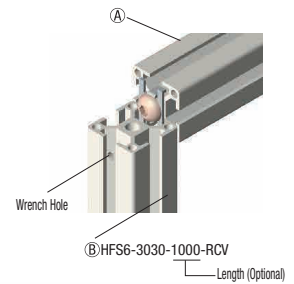
(B) Joint Plate



Type	Components	Material	Surface Treatment
HCJ	Screw	EN 1.7220 Equiv.	Trivalent Chromate
	Joint Plate	EN 1.0330 Equiv.	Trivalent Chromate



Example



Part Number	Components	Unit Price	Volume Discount Rate
Type	No.	(A)Screw (B)Joint Plate	1~99 pc(s) 100~160
HCJ	8-45	M12	8-45
(Trivalent Chromate)	8-60		For 8-60

Screw Joints	Applicable Extrusion No.	[Exception] Extrusion Not Available
HCJ8-45	8-4545* 8-4590* 8-45180	* Not applicable to HFSL (light type). *Curved HFS8-4545 is not applicable since wrench holes cannot be added. For GFS8-100100 and GFS8-100200, bracket connection is recommended as they are heavy.
HCJ8-60	8-6060	



Ordering
Example

Part Number
HCJ8-45

■ **Features:** Screw joint installable without alterations. (Wrench holes are necessary on the mating extrusion.)

■ Aluminum Extrusions with Built-in Screw Joints



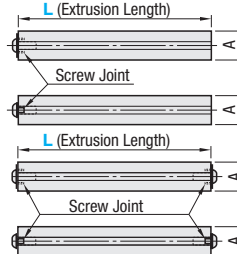
RoHS 10

JFSC□-□□□□L

(Left End Face Screw Joint Pre-Inserted Type)

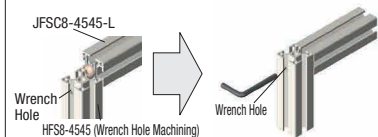
JFSC□-□□□□W

(Both End Face Screw Joints Pre-Inserted Type)



Example

Wrench holes are necessary on the mating extrusion.



Part Number	Joint Component	L 0.5mm Increment	Extrusion	Built-in Joint Component Screw Joints	Quantity	A	Required Wrench for Tightening	Extrusion Unit Price	Joints, Others
	8-4545	(Left End Face only)	HFS8-4545 (P681)	HCJ8-45	1	45	For M12	Less than 300mm	
		(Double End Faces)			2			300mm or more	
JFSC	8-6060	(Left End Face only)	HFS8-6060 (P689)	HCJ8-60	1	60			
		(Double End Faces)			2				



Ordering
Example

Part Number - L
JFSC8-4545L - 1200



Alterations

Alterations only on this page are available.

Alterations	Code	Extrusion	Spec. Tap	Depth
Right End Face Tapping	RTP	8-4545	M12 (Heli-Coil Insert)	18
Applicable to Left End Pre-Inserted Type only.				

Alterations	Code	Extrusion	Spec. H	Hole Dia.
Right End Face Wrench Hole	RCH	8-4545	22.5	8
Applicable to Left End Pre-Inserted Type only.				