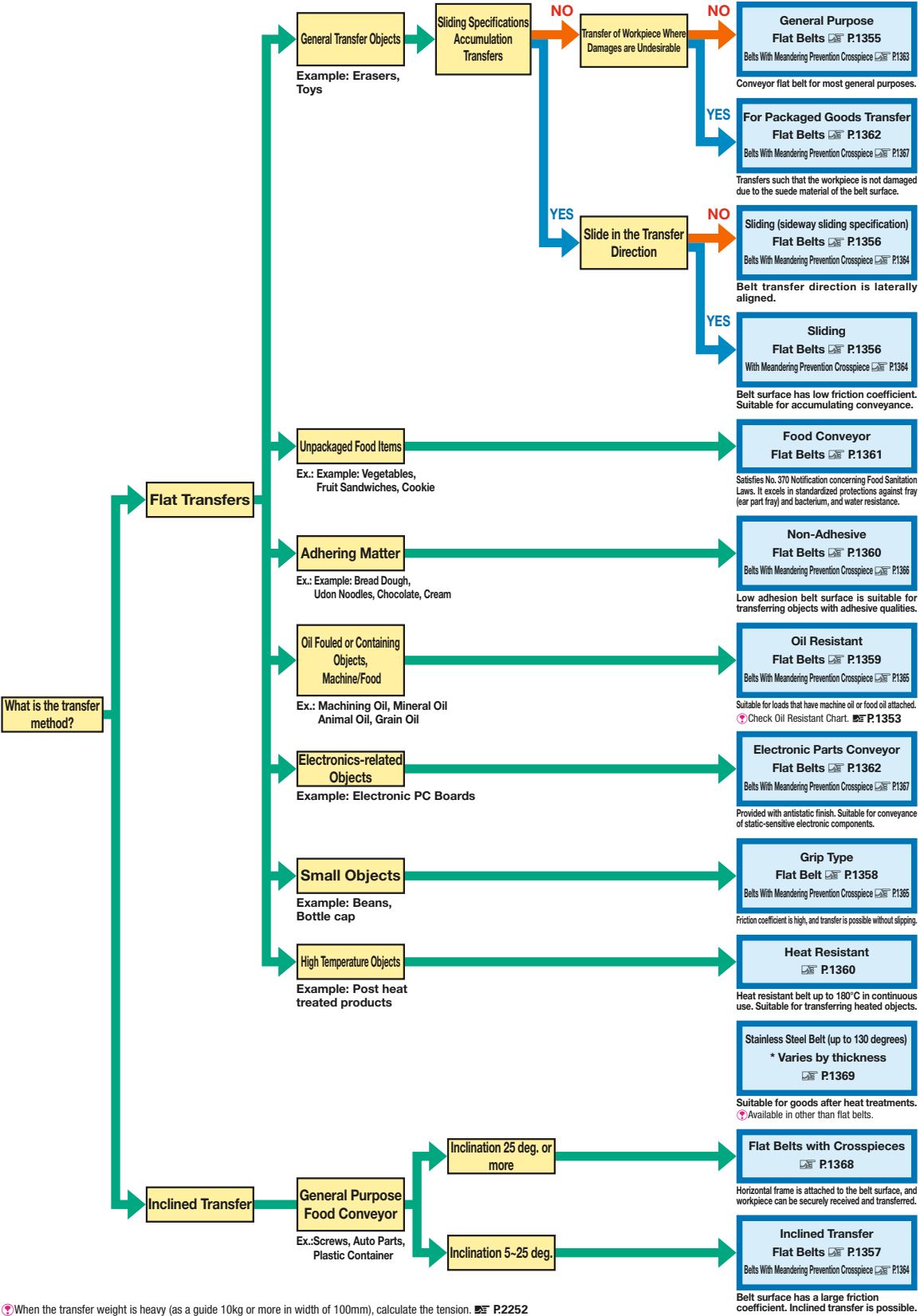


Flat Belts - List by Belt Lineup

Flat Belts - Flat Belt Specification Selection Flow Chart

Usage	Type	Appearance			Min. Pulley Dia.	Material		Friction Coefficient (Ref. Against Polished Steel)	
		Front	Back	2x surface enlarged		Surface	Back	Front	Back
Non-Adhesive	NSHBLT				25	Polyurethane	Polyester	0.2	0.15
	NSHBLTS NSHBLTDS				15	Polyurethane	Polyester	0.6	0.2
	NSHB NSHDSB				15	Thermoplastic Polyurethane	Polyester Canvas	0.6	0.2
	NSHBLG NSHBLGDS				15	Thermoplastic Polyurethane	Polyester Canvas	0.6	0.2
	NSHBWN NSHBWDSN				25(15)*1	Thermoplastic Polyurethane	Polyester Canvas	0.6	0.2
	NSHBN NSHBDSN				25(15)*1	Thermoplastic Polyurethane	Polyester Canvas	0.6	0.2
	NSHBLGN NSHBLGDSN				25(15)*1	Thermoplastic Polyurethane	Polyester Canvas	0.6	0.2
	HFHBG HFHBDSG				15	Thermoplastic Polyurethane	Polyester Canvas	0.4	0.2
	HFHBW HFHBDSW				15	Thermoplastic Polyurethane	Polyester Canvas	0.4	0.2
	HFHBGN HFHBGDSN				30(15)*1	Thermoplastic Polyurethane	Polyester Canvas	0.4	0.2
	HFHBWN HFHBWDSN				30(15)*1	Thermoplastic Polyurethane	Polyester Canvas	0.4	0.2
Food Conveyor	BHFHBWN BHFHBWDSN				30(15)*1	Thermoplastic Polyurethane	Polyester Canvas	0.4	0.2
	FHBLT				20	Polyurethane	Polyester	0.2	0.15
	KBLW KBLDSW				15	Thermoplastic Polyurethane	Polyester Canvas	0.6	0.2
	KBLT KBLTDSB				15	Thermoplastic Polyurethane	Polyester Canvas	0.6	0.2
	KBLWSN KBLWDSN				25(15)*1	Thermoplastic Polyurethane	Polyester Canvas	0.6	0.2
	KBLWDN KBLWDSN				50	Thermoplastic Polyurethane	Polyester Canvas	0.6	0.2
	KBLWT KBLWDST				100	Thermoplastic Polyurethane	Polyester Canvas	0.6	0.2
	PHBLB PHBLDSB				20	Thermoplastic Polyurethane	Polyester Canvas	0.6	0.2
	PHBLBN PHBLBDSN				30	Thermoplastic Polyurethane	Polyester Canvas	0.6	0.2
For Packaged Goods Transfer	PHBLWN PHBLWDSN				30	Thermoplastic Polyurethane	Polyester Canvas	0.6	0.2
	FBLG FBLGDS				25	Suede Non-woven Fabric	Polyester Canvas	-	-
	FBLW FBLWDS				25	Suede Non-woven Fabric	Polyester Canvas	-	-
	FBLGN FBLGDSN				30	Suede Non-woven Fabric	Polyester Canvas	-	-
For Electronic Parts Transfer	FBLWN FBLWDSN				30	Suede Non-woven Fabric	Polyester Canvas	-	-
	DHBLT				25	Conductive Polyurethane	Polyester	0.2	0.1
	DHBLTS DHBLTDS				15	Conductive Polyurethane	Polyester	0.8	0.2
	DHBLGN DHBLGDSN				25(15)*1	Thermoplastic Polyurethane	Polyester Canvas	0.6	0.2

*1: Number in () is the value when allowable tension is 5N/mm.



When the transfer weight is heavy (as a guide 10kg or more in width of 100mm), calculate the tension. P.2252
Example of transfer workpiece is a guide. For more information, check the Product page.
Performance Chart is mentioned on respective Product page. Determine if suitable to transfer workpiece.