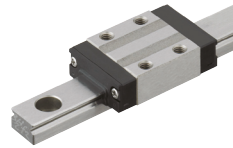
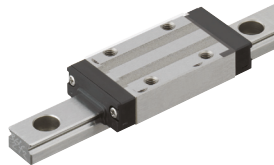
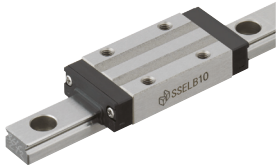


Linear Guide

Miniature Linear Guide



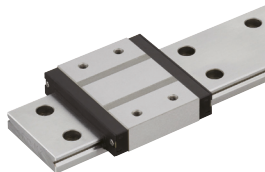
Product Name	Standard	C-VALUE Products - Standard Blocks	Standard Blocks with Dowel Holes
Page	533	535	537



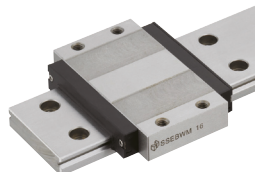
Long	C-VALUE Products - Long Blocks	Long Blocks with Dowel Holes
539	541	543



Short Blocks / Short Blocks with Dowel Holes	Wide Standard Blocks	Wide Long Blocks	Extra Long Blocks
545 - 547	549	551	553

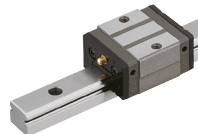
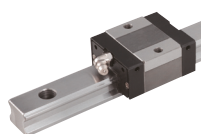


Wide Rails, Standard Blocks	C-VALUE Products - Wide Rails, Standard Blocks	Wide Rails, Standard Blocks with Dowel Holes
555	557	559

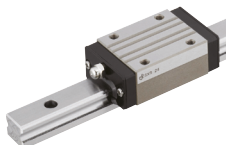


Wide Rails, Long Blocks	Wide Rails, Long Blocks with Dowel Holes	Wide Rails, Wide Standard Blocks	Wide Rails, Wide Long Blocks
561	563	565	567

Medium/ Heavy Load Linear Guide



Product Name	Medium Load, Carbon Steel / Stainless Steel	C-VALUE Products - Medium Load, Carbon Steel	Medium Load, Plastic Retainer, Carbon Steel / Stainless Steel	Medium Load, With Dowel Holes, Carbon Steel
Page	569, 589	571	573, 591	597



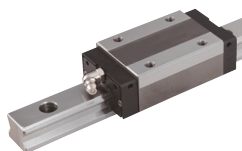
Medium Load, Carbon Steel / Stainless Steel	C-VALUE Products - Heavy Load, Carbon Steel	Heavy Load, Plastic Retainer, Carbon Steel / Stainless Steel	Heavy Load, With Dowel Holes, Carbon Steel
575, 589	577	579, 593	597

Produced at **SURUGA Production Platform**, one of MISUMI group companies. (Excluding some of the products)

Striving to be a creative company with an outstanding machining technology.

■ Company Name SURUGA Production Platform Corporation
 ■ HQ 505 Nanatsu Shinya, Shimizu-ku, Shizuoka-shi, Shizuoka-ken ZIP424-8566
 ■ Established May 8th, 1964

Expands its business with "Precision Machining Technology" based on micron-level accuracies. Known as a leading manufacturer of the punch & dies components in the domestic market, we manufacture press dies components as well as plastic mold components, optical devices and FA system components.



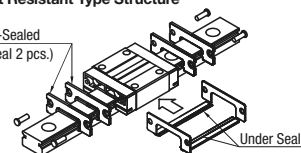
Super Heavy Load, Plastic Retainer, Carbon Steel / Stainless Steel	C-VALUE Products - Super Heavy Load, Carbon Steel	Extra Super Heavy Load, Plastic Retainer, Carbon Steel	C-VALUE Products - Extra Super Heavy Load, Carbon Steel
581, 595	583	585	587

Heat / Dust Resistant Linear Guide



■ Dust Resistant Type Structure

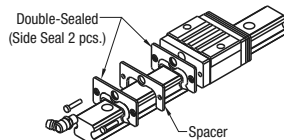
Double-Sealed
(Side Seal 2 pcs.)



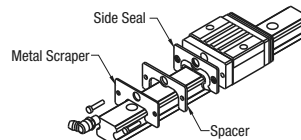
Product Name	Miniature Linear Guides - Heat Resistant	Miniature Linear Guides - Dust Resistant
Page	599	601



■ Double-Sealed

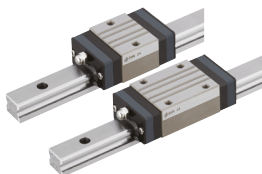


■ With Metal Scrapers

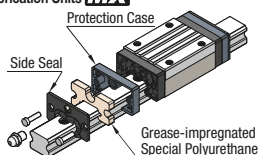


Linear Guides for Medium/Heavy Load - Dust Resistant
603-606

With Lubrication Unit Linear Guide



■ Lubrication Units **MX**

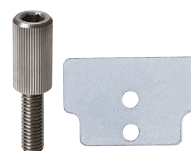
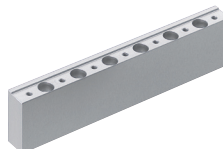


Linear Guide LTBC Plating

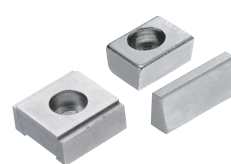


Product Name	With Medium/Heavy Load Lubrication Units	Product Name	LTBC Plating
Page	569, 575, 589, 597, 603-606	Page	531

Linear Guide Optional



Product Name	Linear Guide Clamps - For Miniature Linear Guides	Linear Guide Clamps - For Medium/Heavy Load Linear Guides	Height Adjusting Blocks for Linear Guides	Stopper Bolts / Block Stopper Plate
Page	607	608	609-611	612



Rail Mounting Hole Caps (Package)	Rail Push Plates	Linear Locks / Linear Guide Lock Plates	Linear Guide Lock Units / Linear Guide Taper Locks
612	612	613-614	614

Cross Roller Table



Product Name	Cross Roller Tables	Cross Roller Guides	Ball Slide Guides	Pneumatically Driven Linear Guides
Page	617-618	619	620	623-626